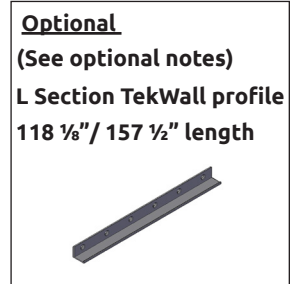


# TEKWALL

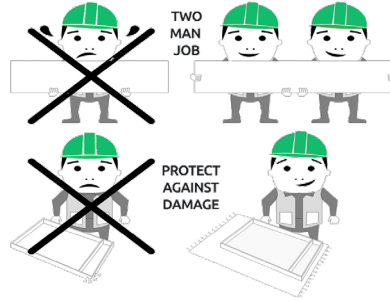
## Installation Guide

**BEFORE YOU START**  
INSTALLATION SHOULD BE PERFORMED BY A COMPETENT PERSON ONLY.  
THIS PRODUCT COULD BE DANGEROUS IF INCORRECTLY INSTALLED  
TEKWALL TO BE FITTED PRIOR TO ANY WALL CABINET INSTALLATION. CABINETS TO BE FITTED ON TOP



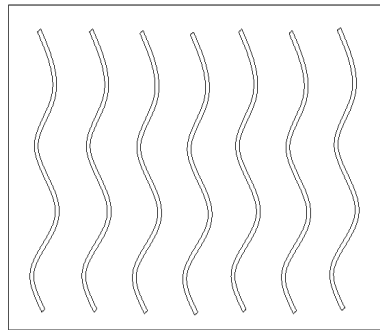
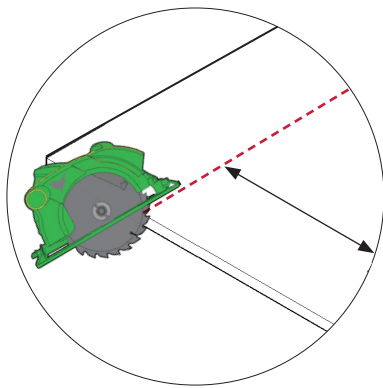
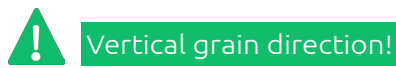
### Step 1.

Making sure you have a clean protected work surface and lay the TekWall panel face down.



### Step 2.

Measure area and cut TekWall to suit.



### Step 3.

Apply good quality bonding adhesive evenly to the rear face of the TekWall.

### Step 4.

Ensuring a vertical grain direction apply even pressure across the TekWall.

## Optional contents only



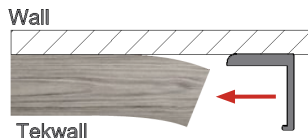
In the event of visible bare edges use L Section TekWall profile. Fit as per instructions below

### Step 1.

Measure the length required and cut the L Section TekWall profile to suit.

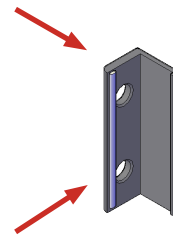
### Step 3.

Carefully prise the edge of TekWall away from the wall creating a gap. Slide the L Section TekWall profile in place re-applying pressure



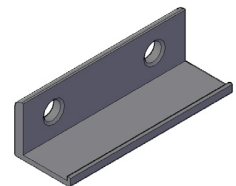
If fitting a bottom rail ensure the L Section profile is securely screwed to the wall before fitting the TekWall.

Back edge (flush with wall)



### Step 2.

Apply a thin layer of bonding adhesive to the inside face of the L Section TekWall profile.



**wren**  
KITCHENS